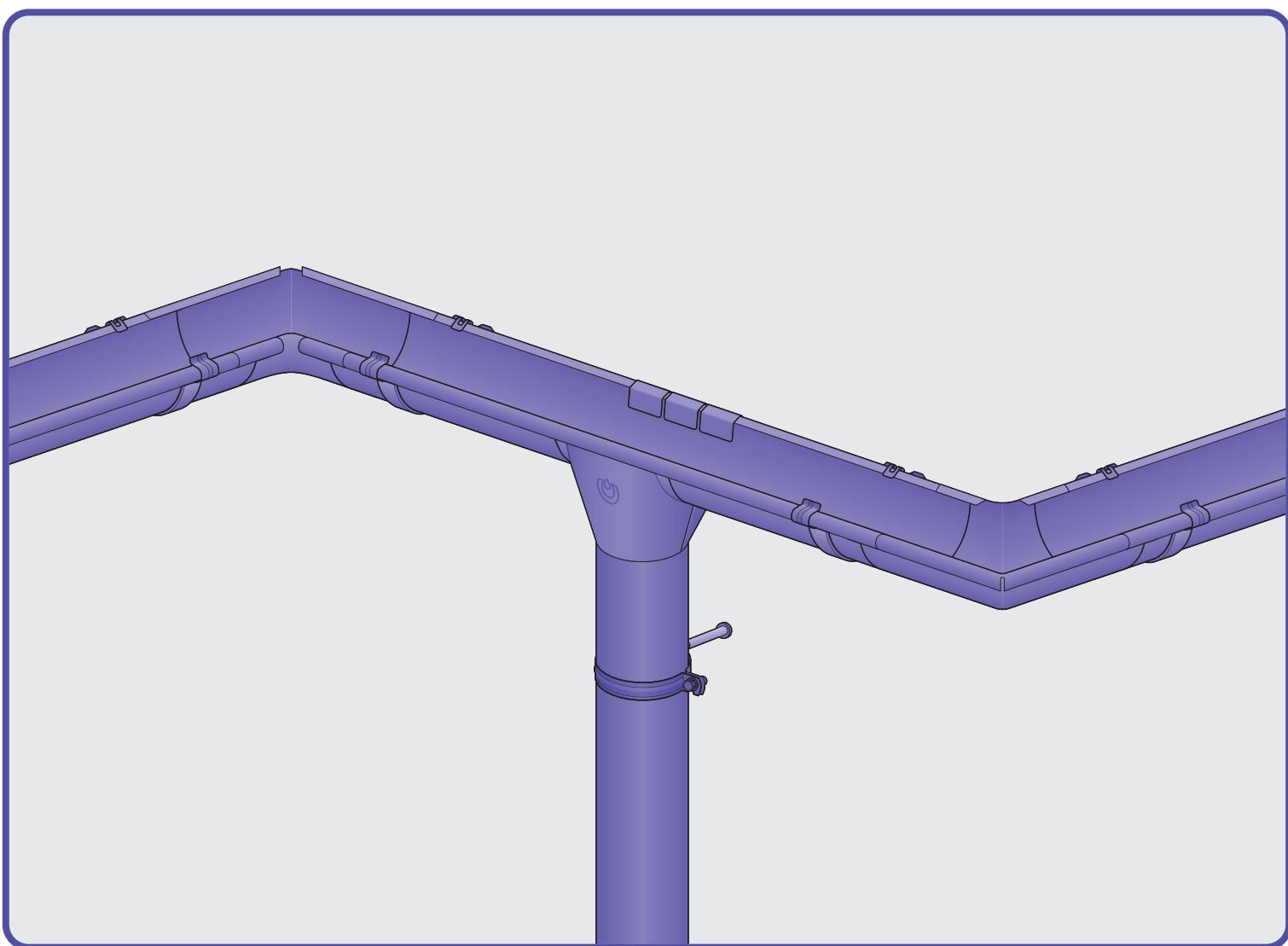


N á v o d n a m o n t á ž
o k a p o v ý s y s t é m o c e l

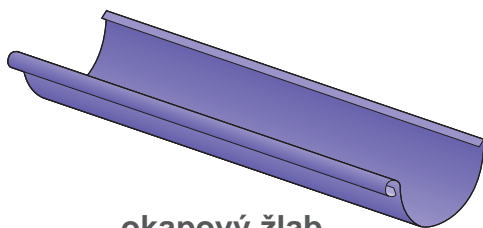


KROP

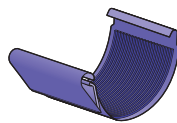
STAL



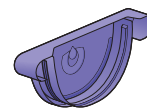
Popis komponentů systému



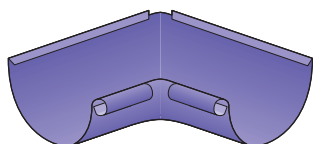
okapový žlab



žlabová spojka



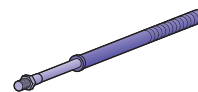
čelo žlabu



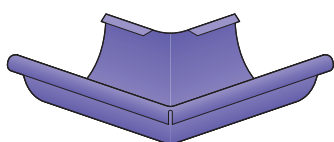
vnitřní kout



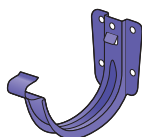
svodová objímka



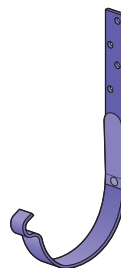
trny k objímce



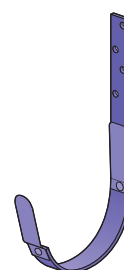
venkovní roh



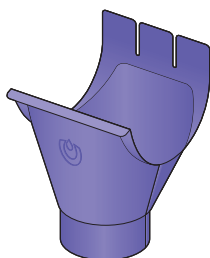
žlabový hák čelní



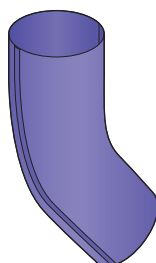
žlabový hák na krokvu



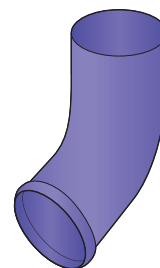
žlabový hák na krokvu



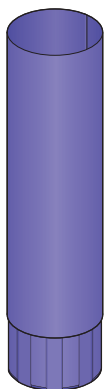
žlabový kotlík



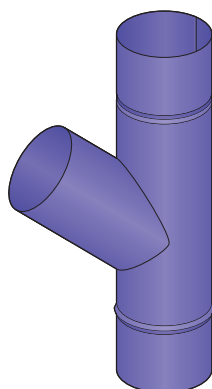
koleno



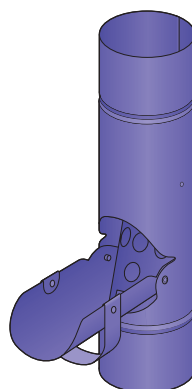
odtokové koleno



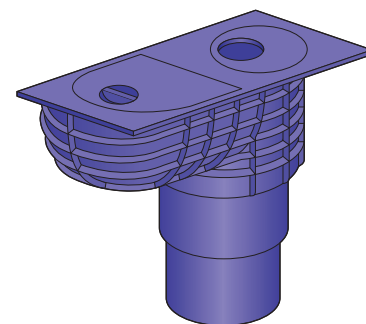
svod



svodová odbočka

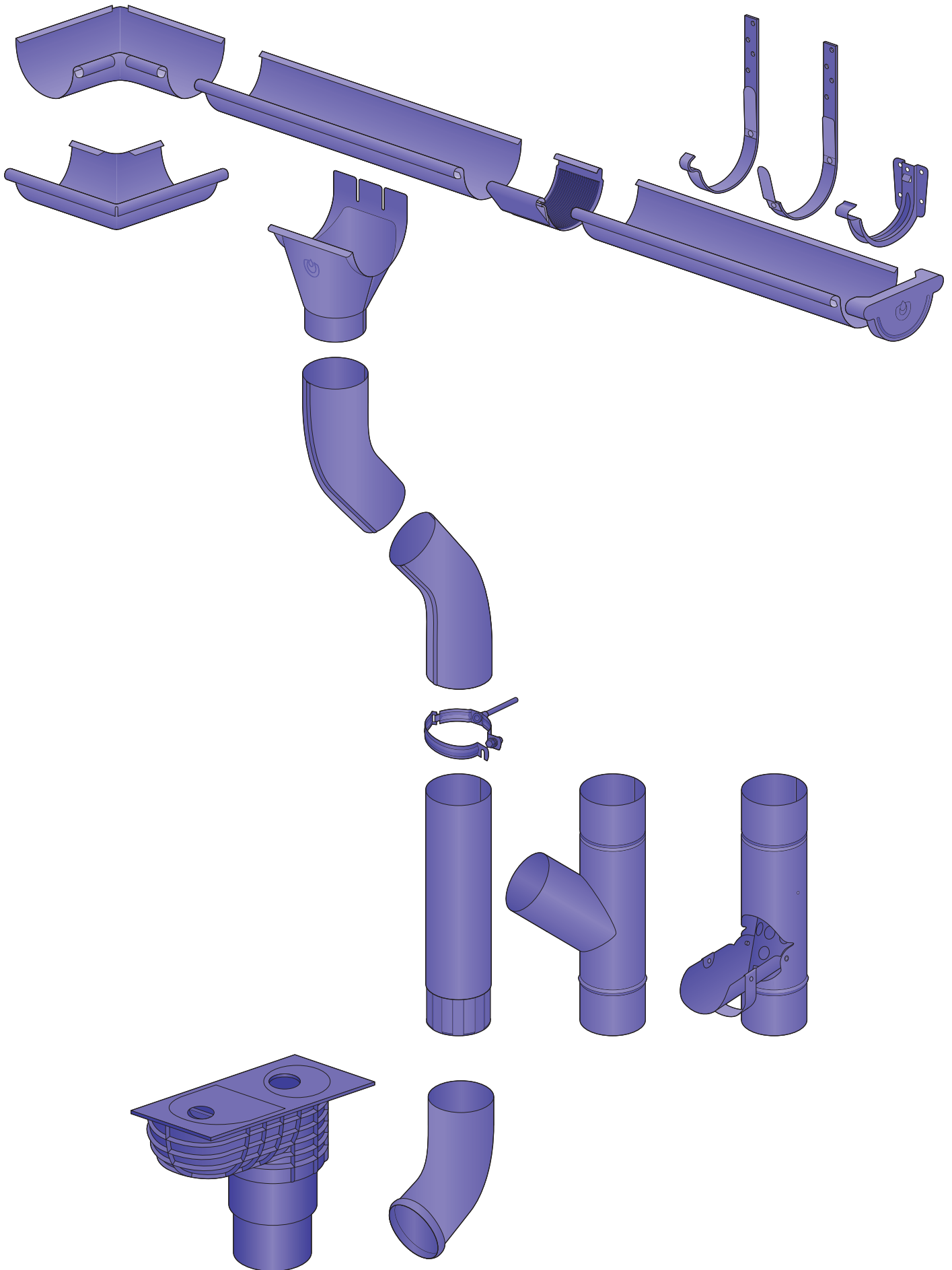


sudová výpusť

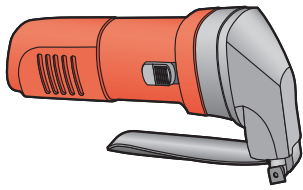


lapač střešních splavenin

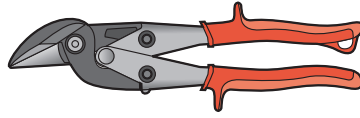
prvky systému



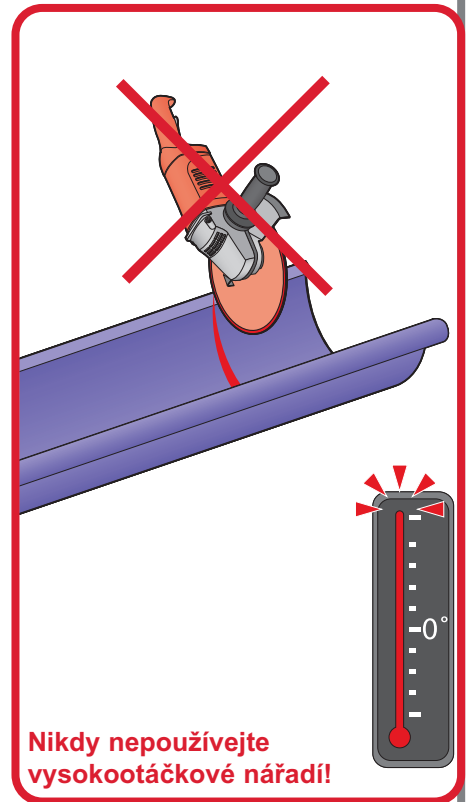
montážní nářadí



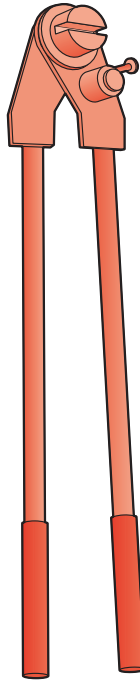
Nibbler



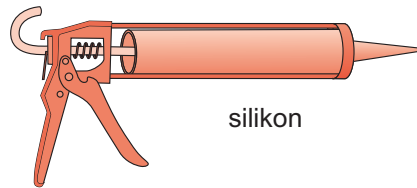
Nůžky na střihání plechu



utahovačka



ohýbací kleště na háky

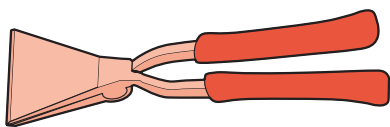
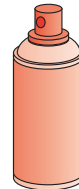


silikon

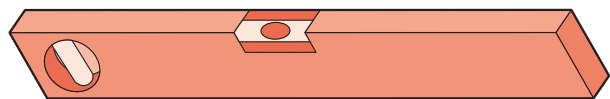


pilka na železo

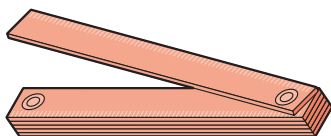
sprej na těsnění



ruční ohýbací kleště rovné



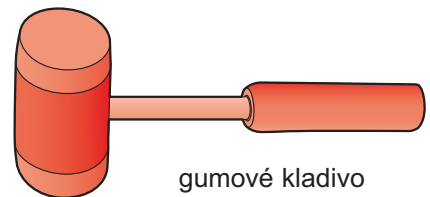
vodováha



metr



tužka

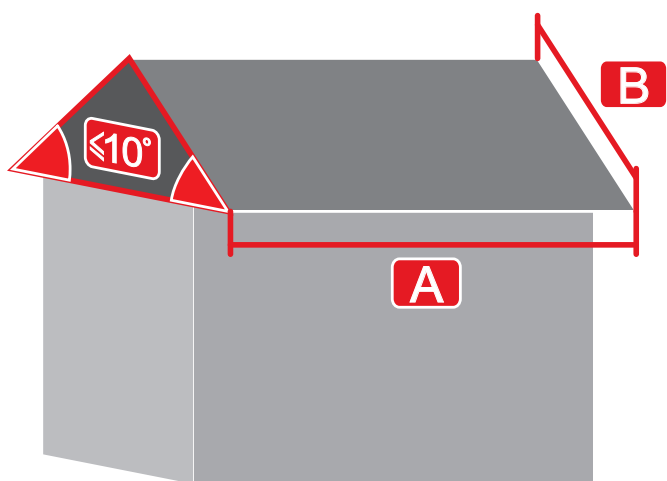


gumové kladivo

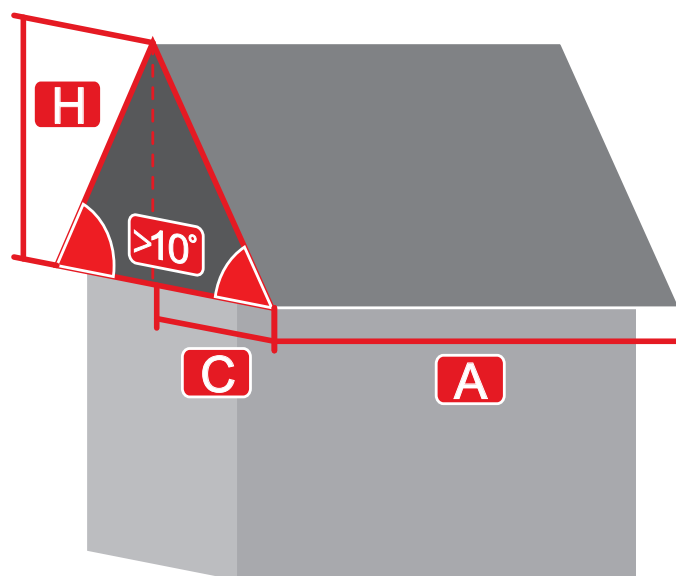
Na řezání žlabů nebo svodů lze používat pouze elektrické nebo ruční nůžky!

1

měření střechy



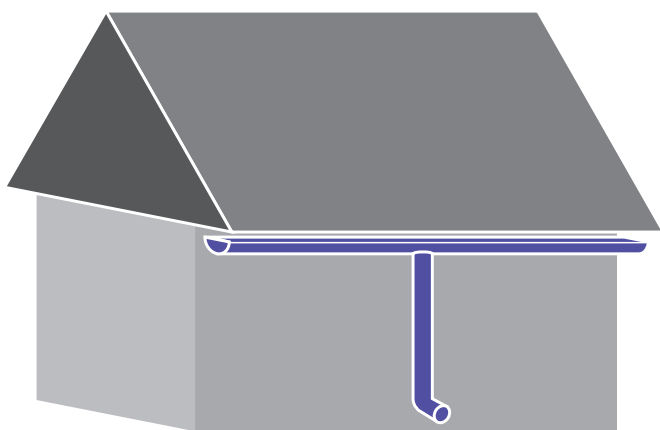
$$E_p = A \times B$$



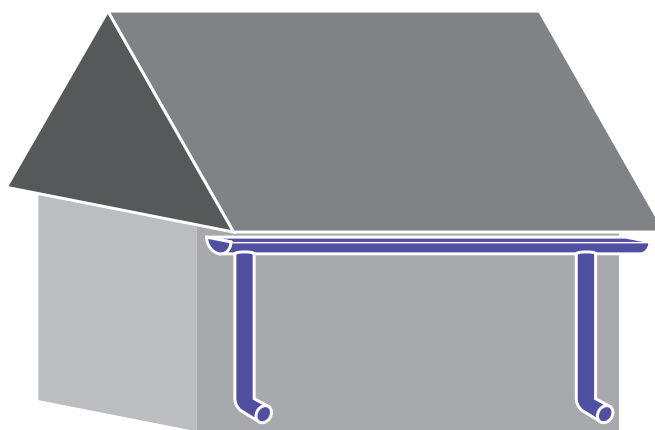
$$E_p = (C + H/2) \times A$$

2

výběr systému



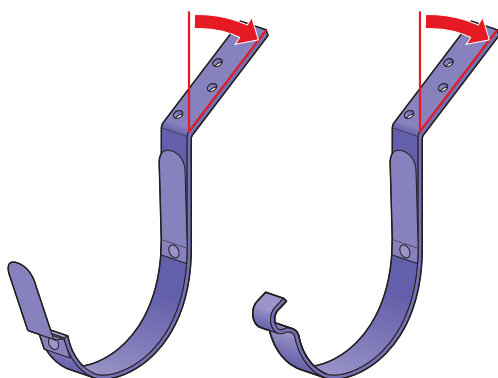
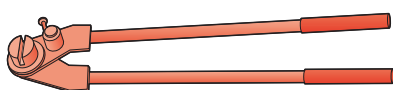
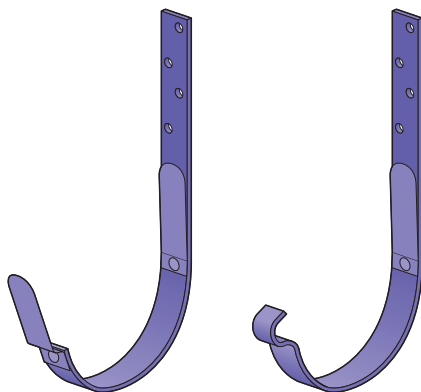
System 125/90 v případě $E_p \leq 100\text{m}^2$
 System 130/90 v případě $E_p \leq 110\text{m}^2$
 System 150/100 v případě $E_p \leq 200\text{m}^2$



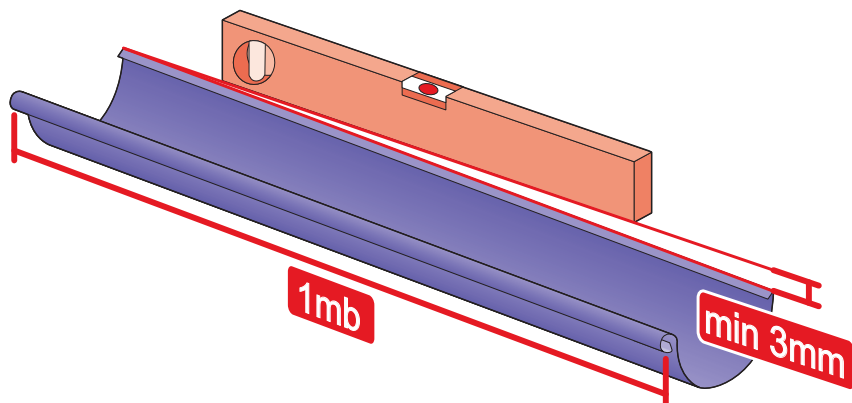
System 125/90 v případě $E_p \leq 200\text{m}^2$
 System 130/90 v případě $E_p \leq 220\text{m}^2$
 System 150/100 v případě $E_p \leq 300\text{m}^2$

3

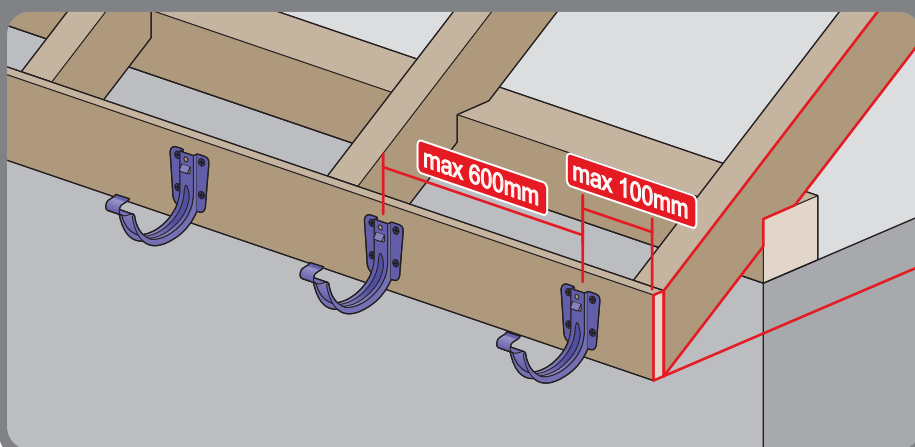
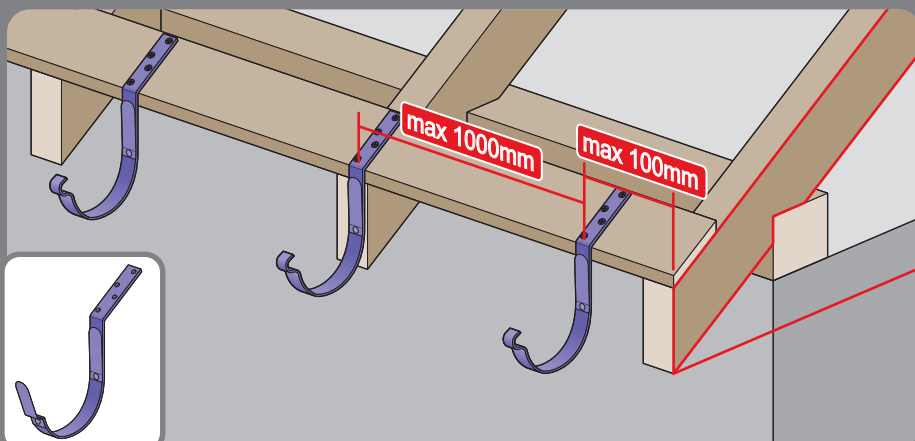
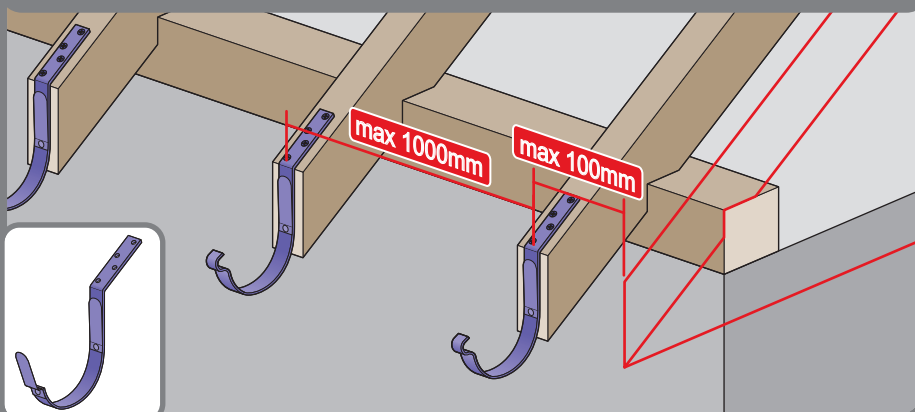
ohýbání háku



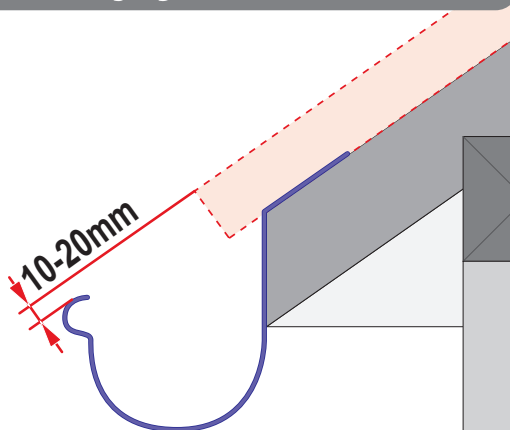
Sklon žlabu min. 0,3% / 1m



vzdálenost háků

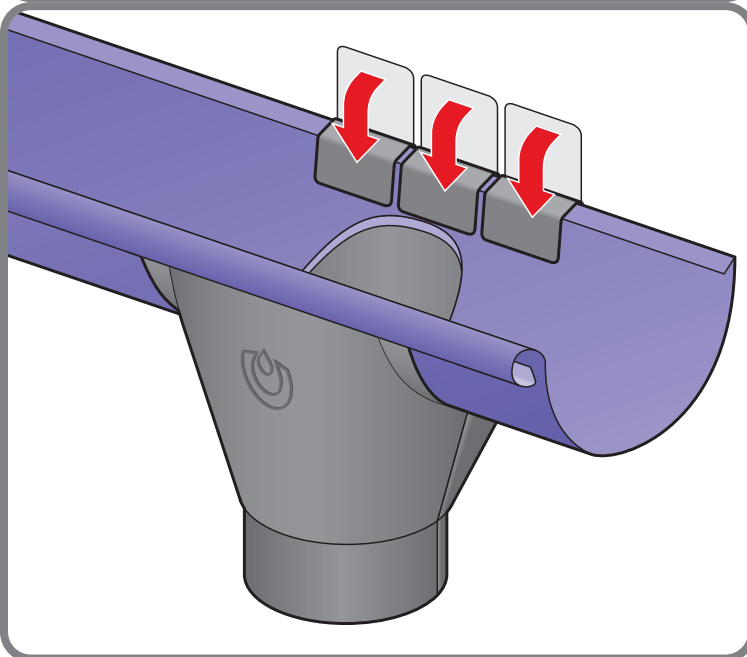
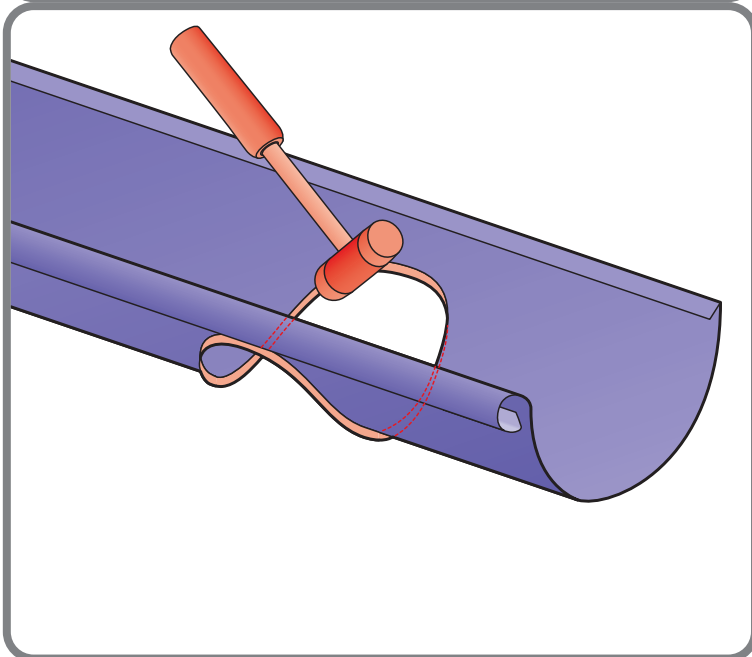
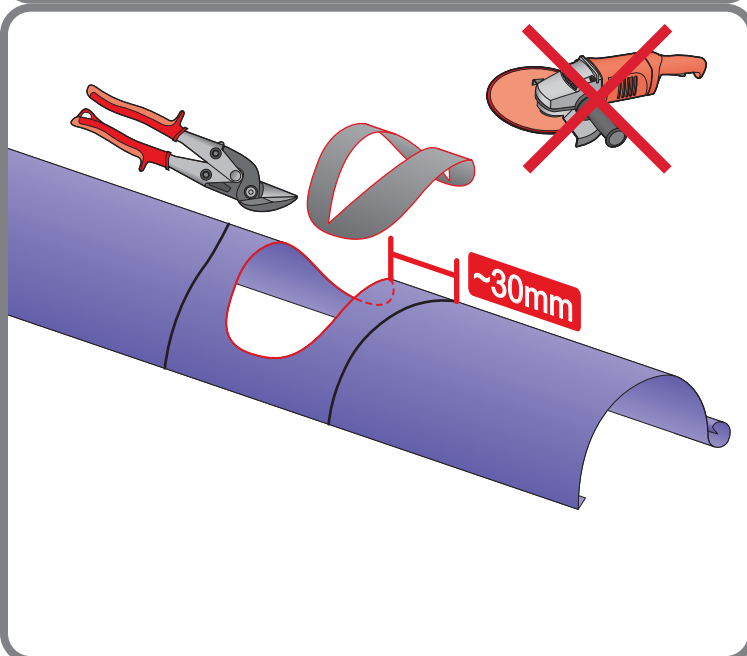
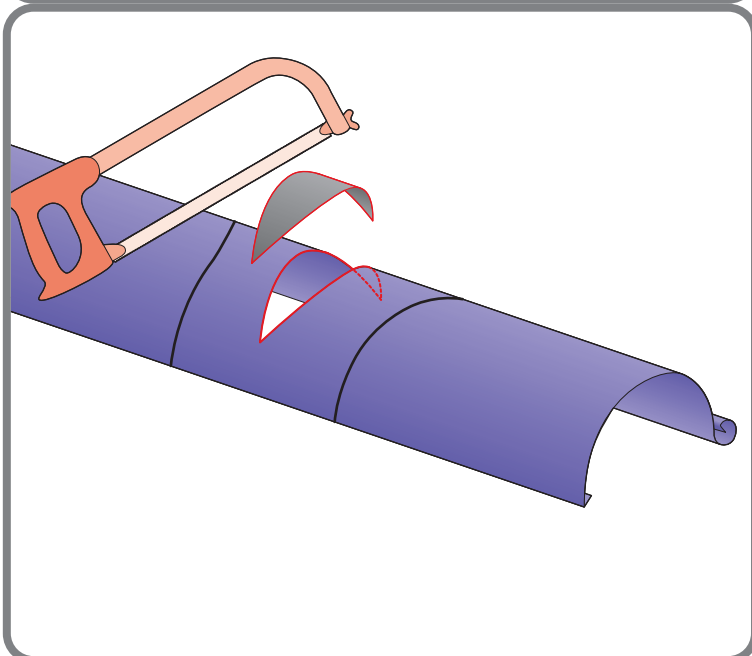
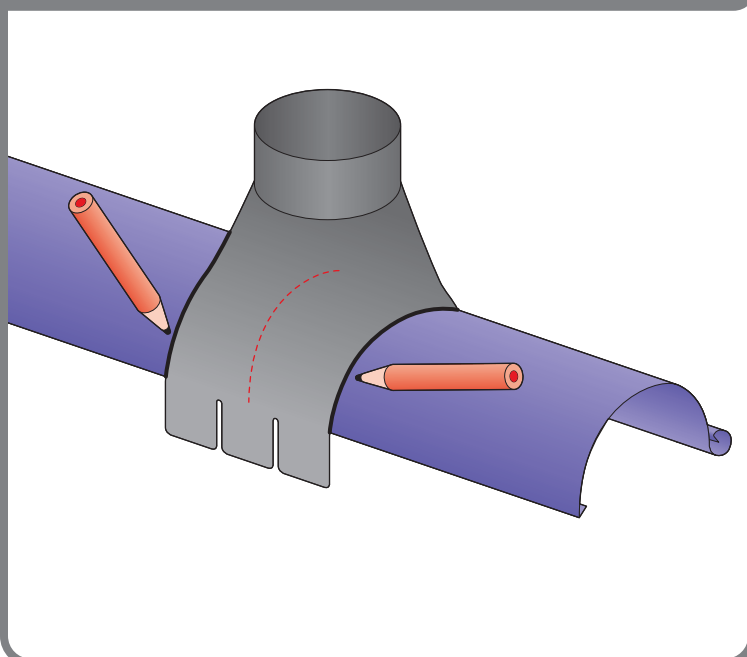
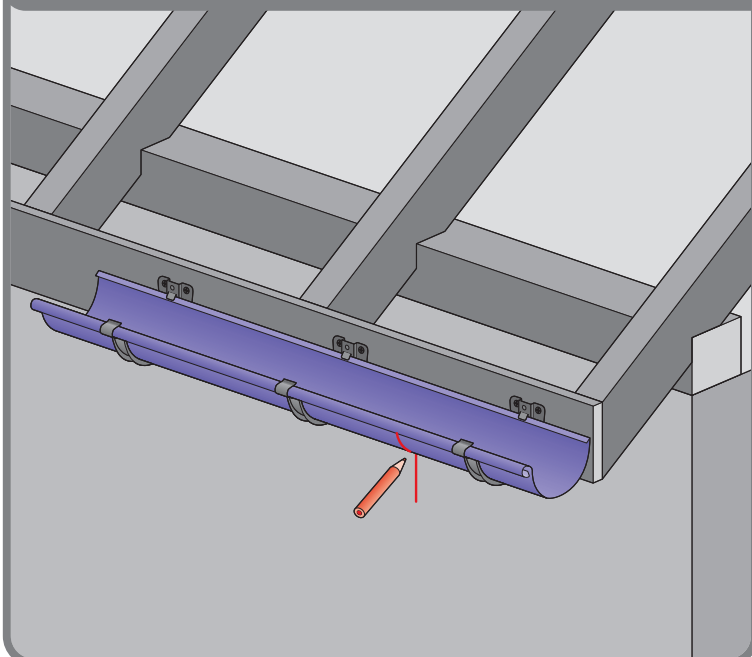


Doporučená
instalace háku v
nejvyšším bodě



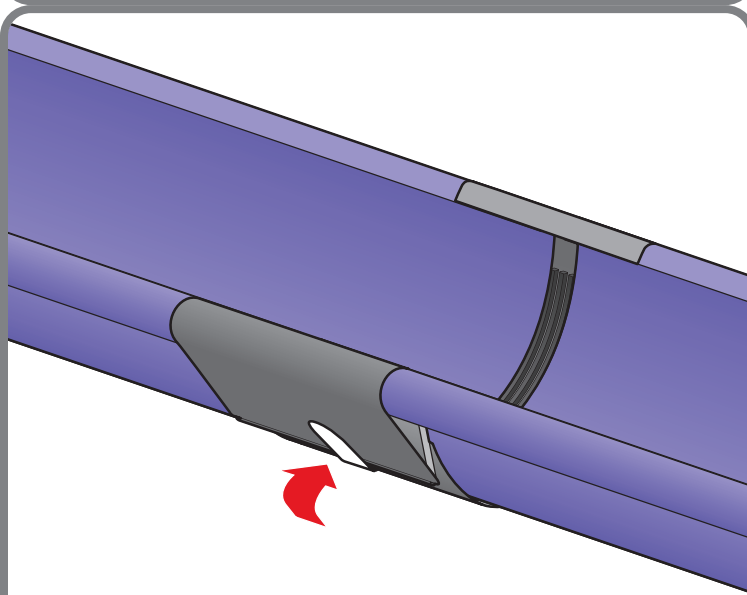
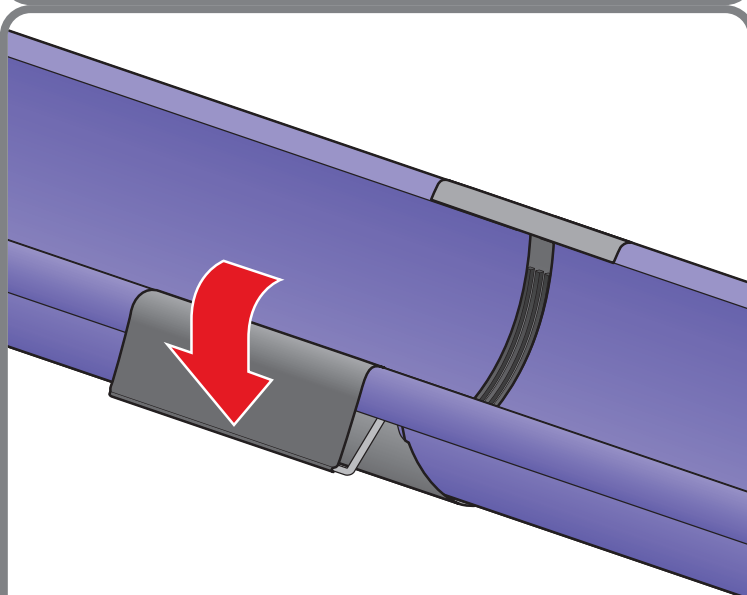
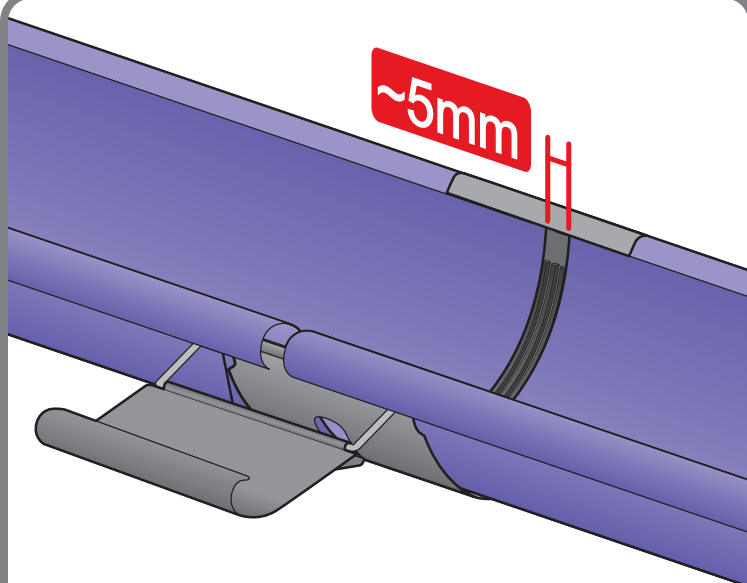
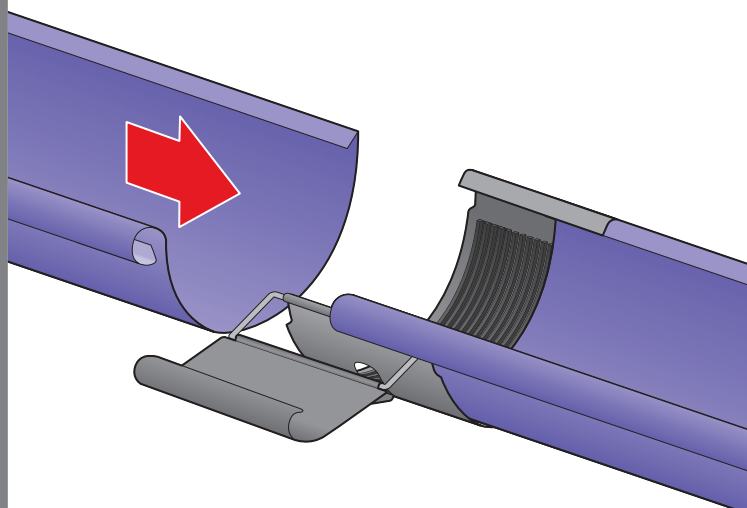
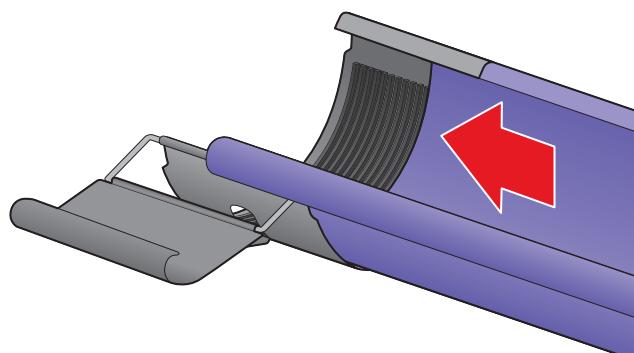
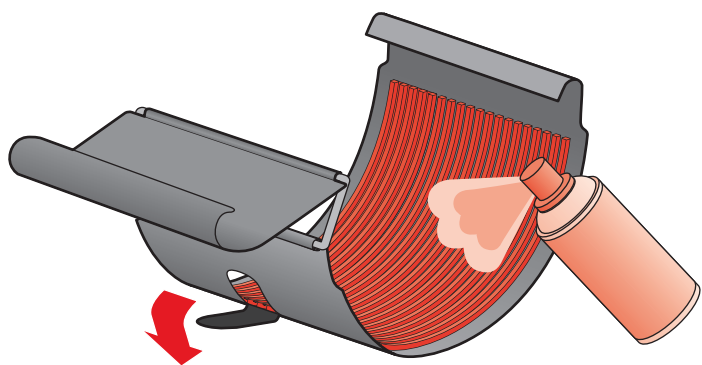
4

montáž žlabu



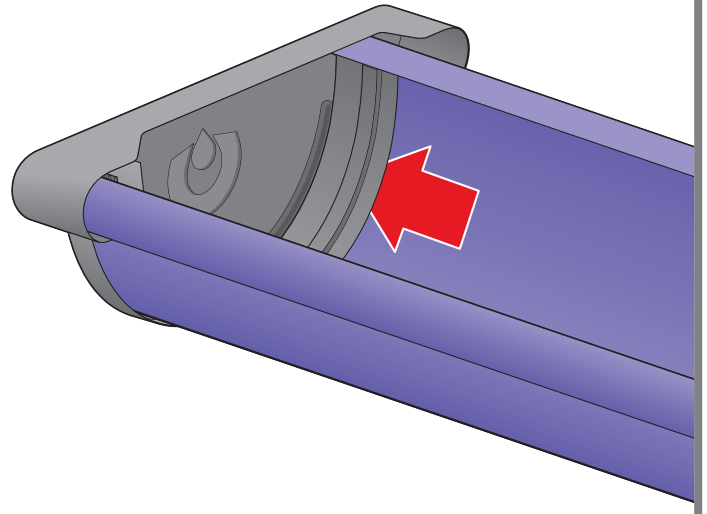
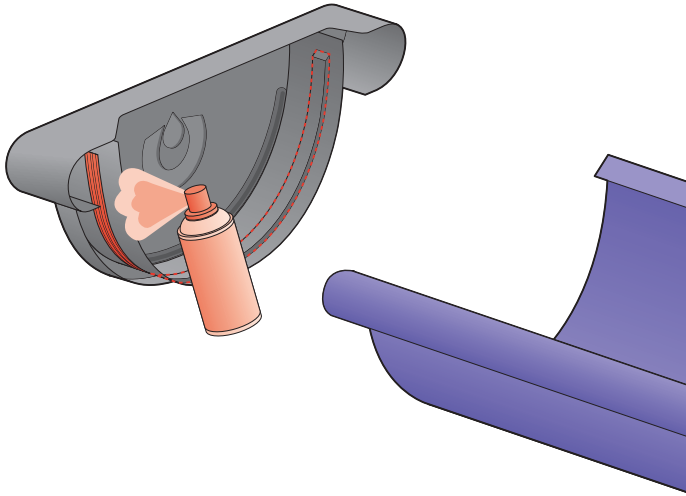
5

Montáž spojek pomocí svorky



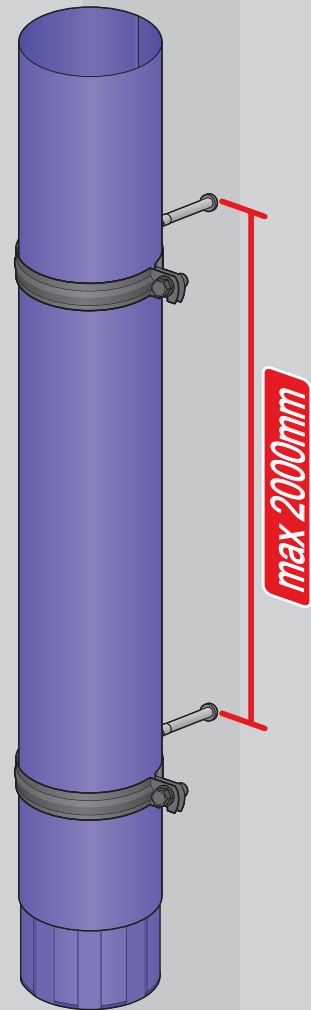
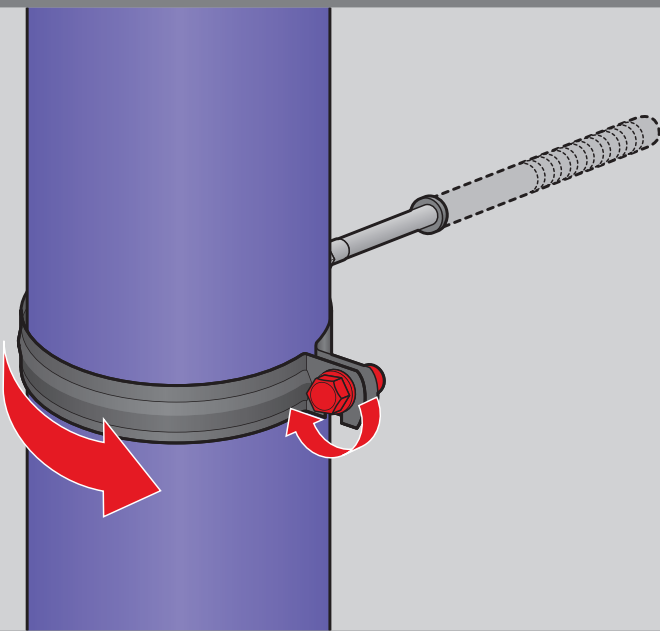
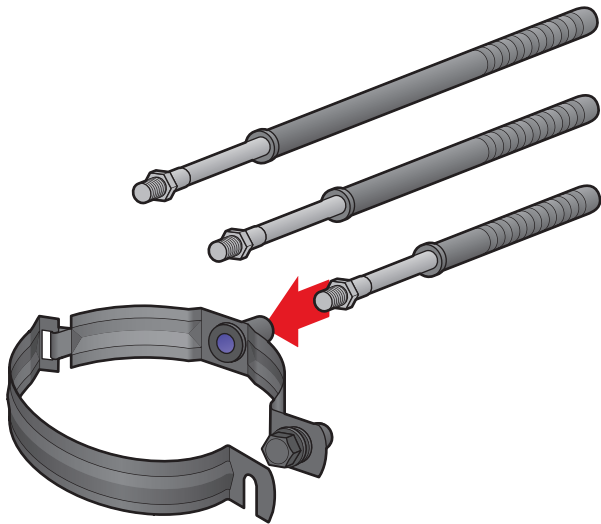
6

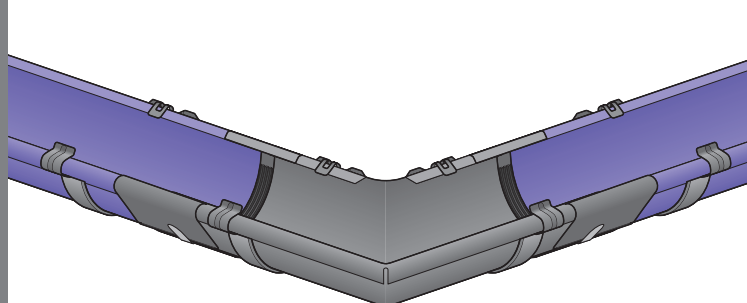
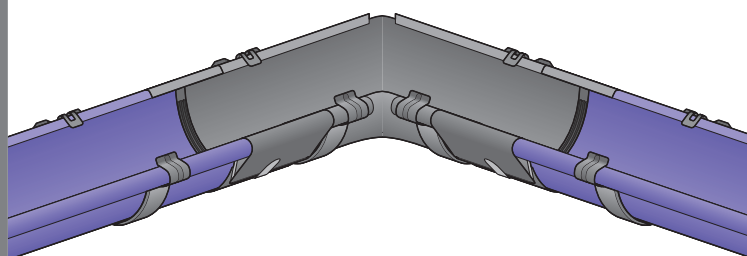
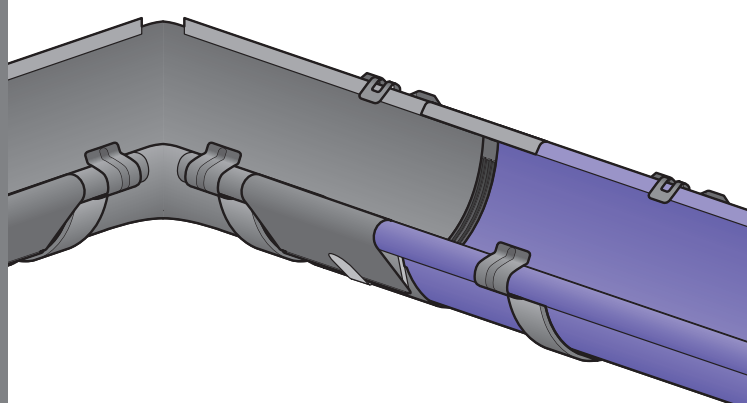
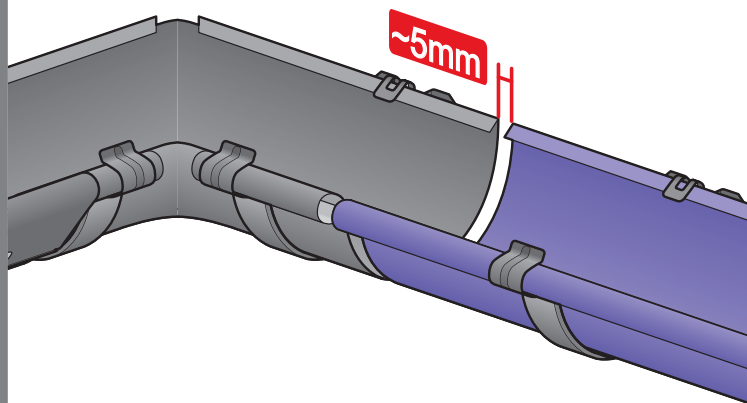
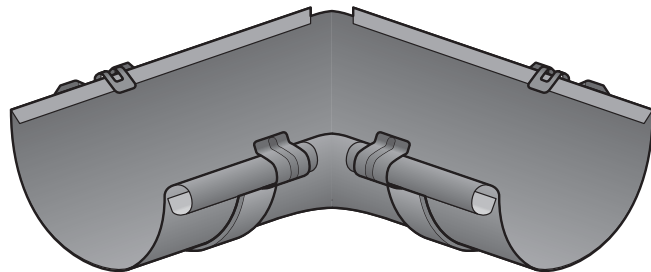
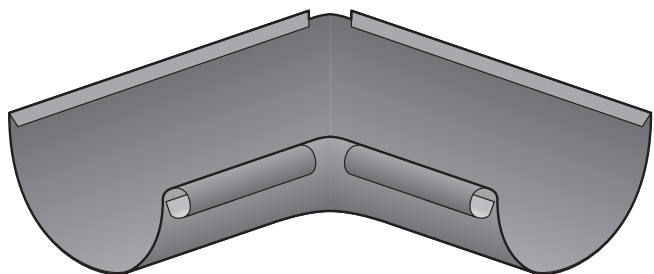
montáž čela

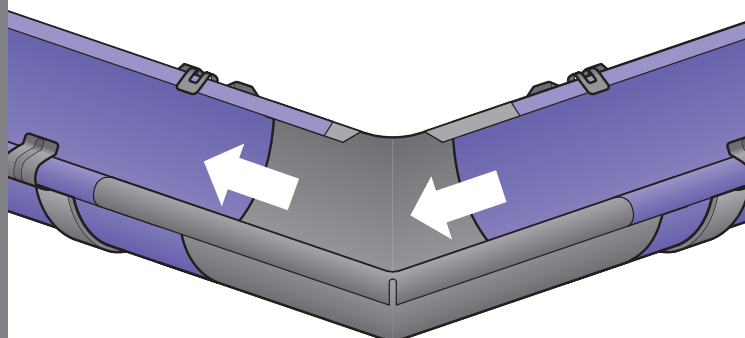
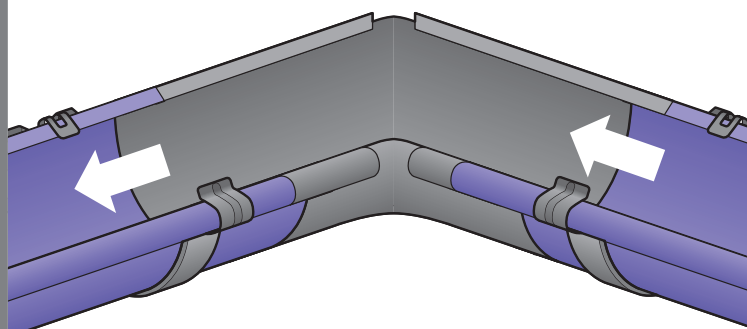
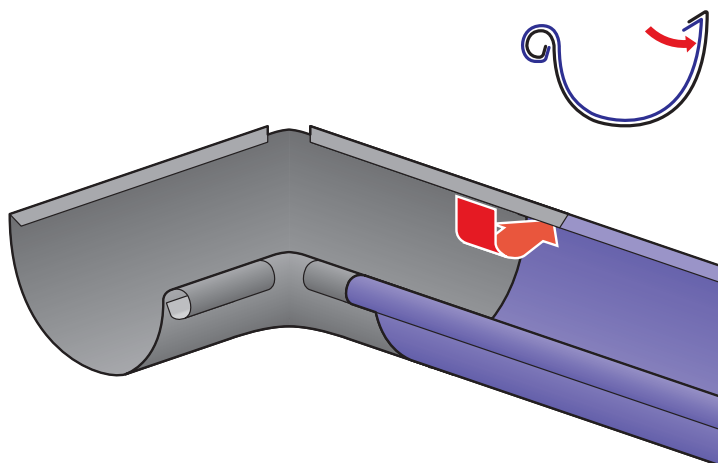
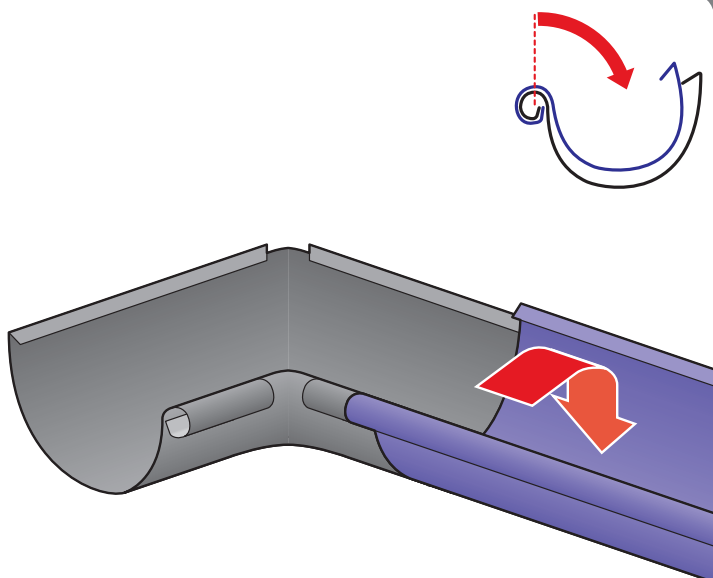
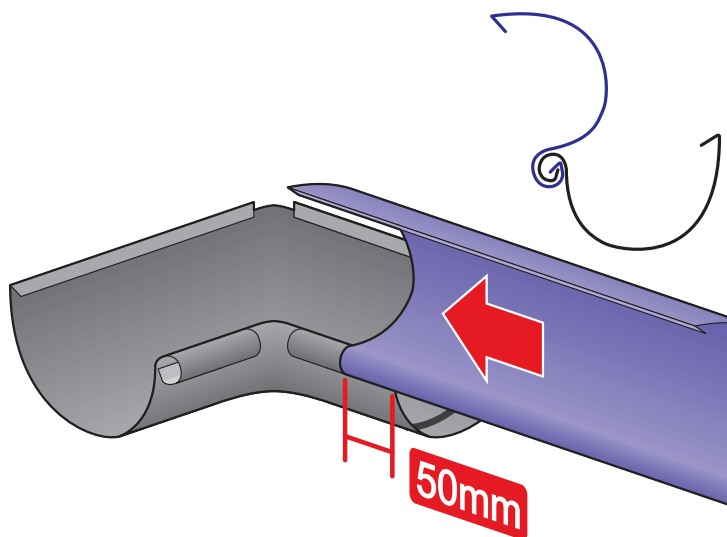
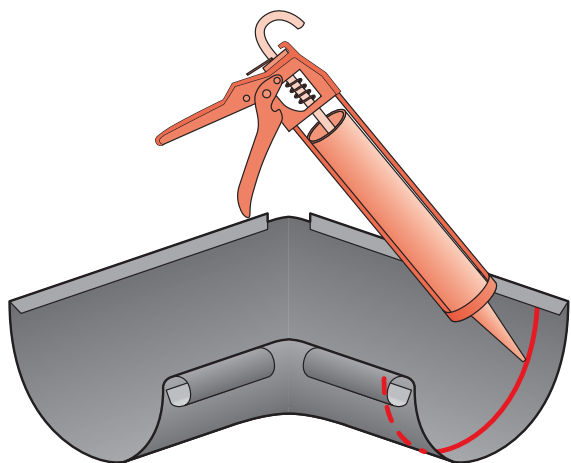


7

montáž objímky

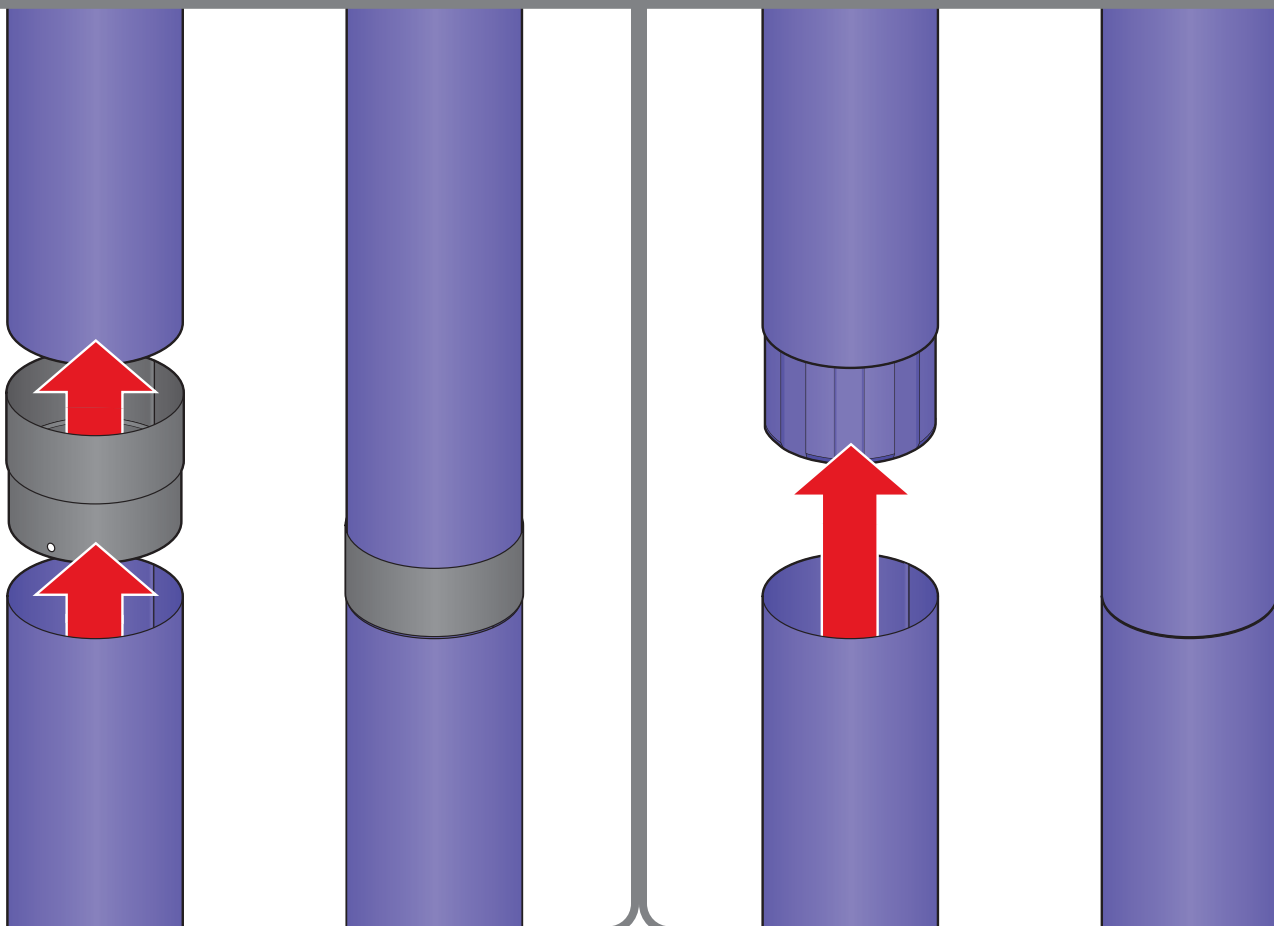






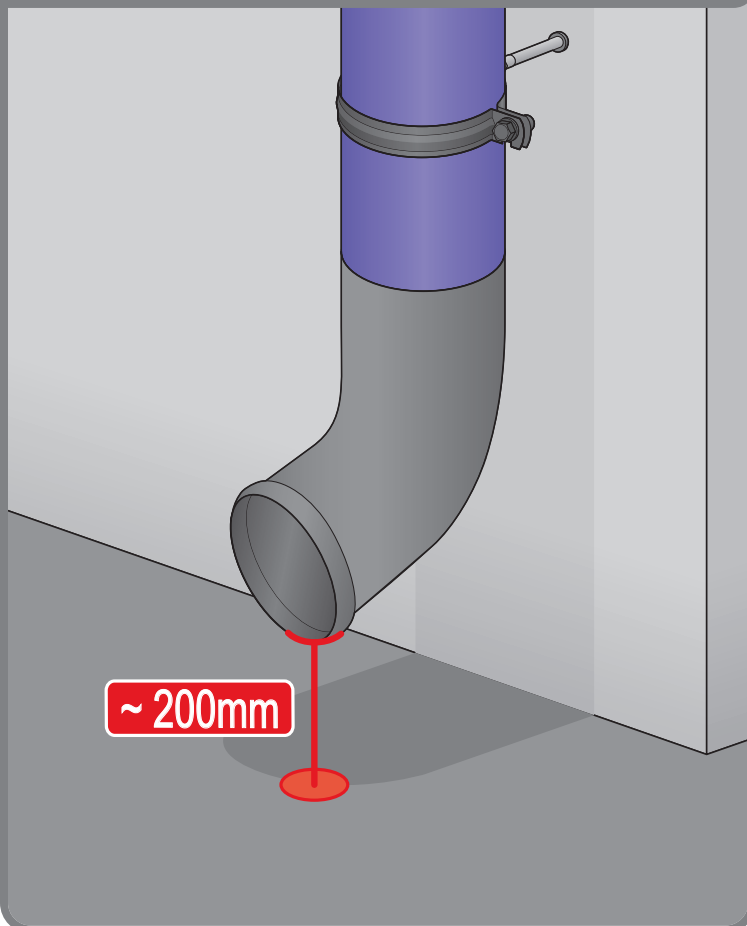
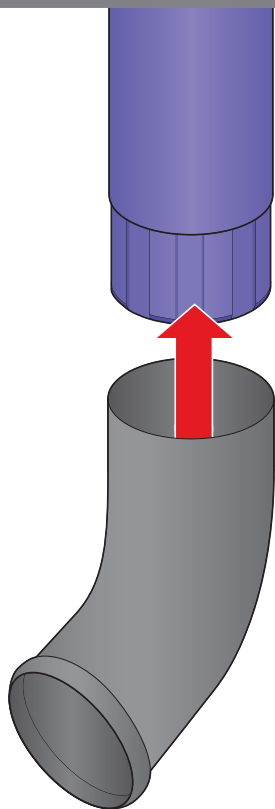
10

připojení svodů



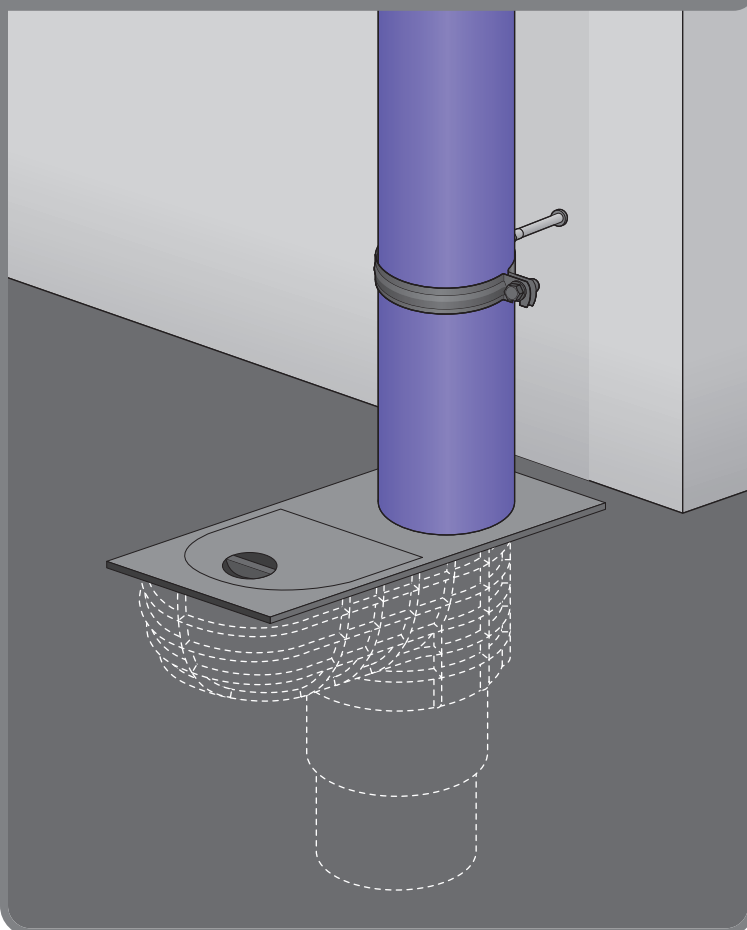
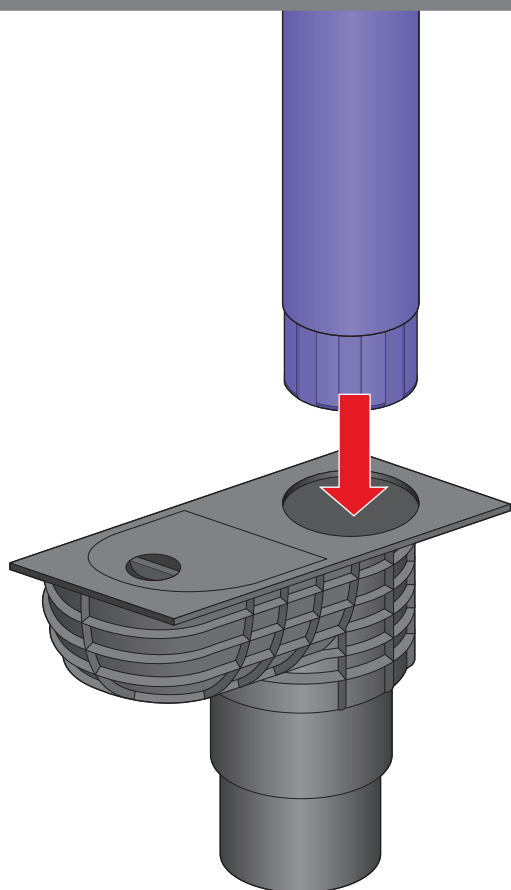
11

montáž odtokového kolena



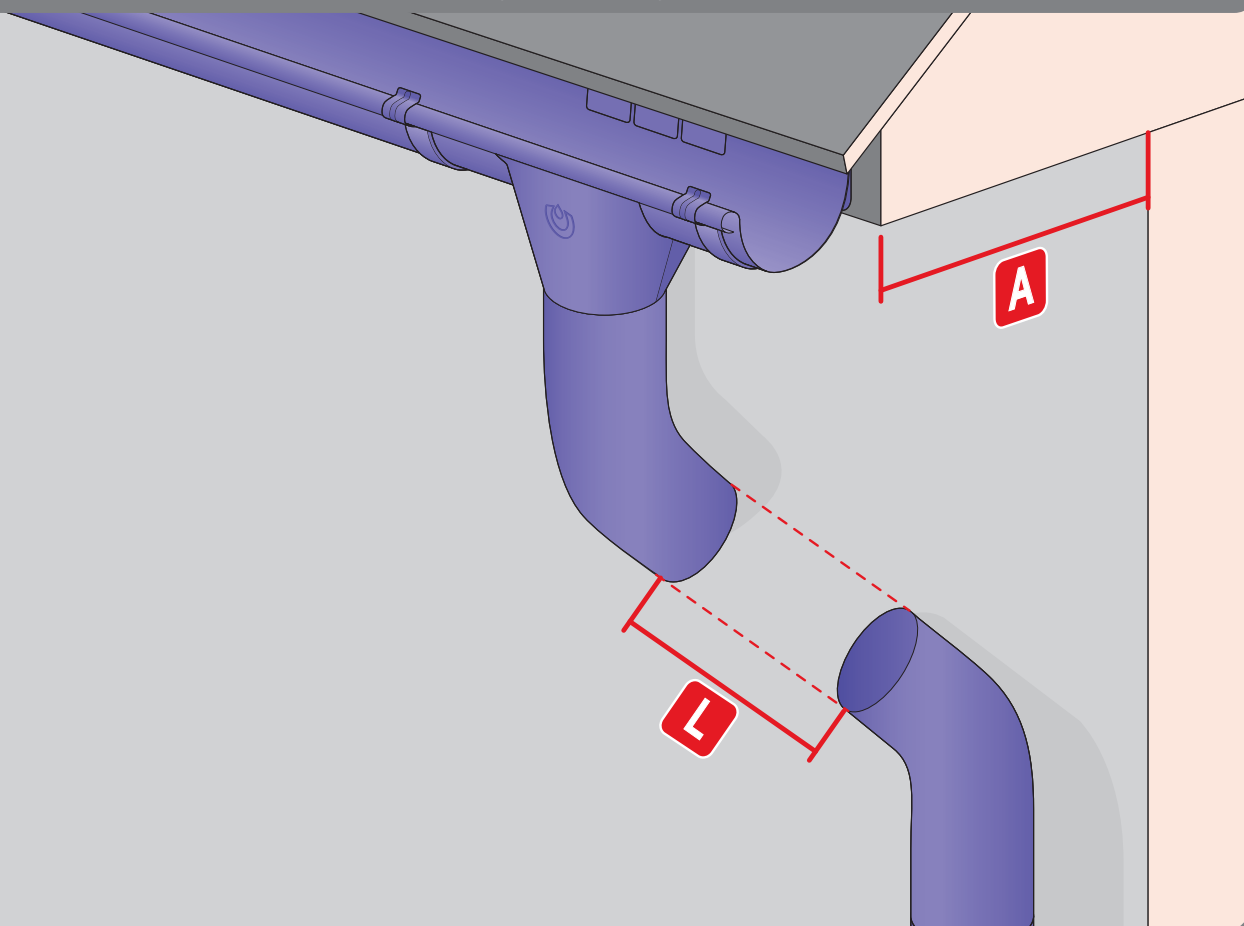
12

montáž lapače střešních splavenin



13

řezání svodu s vysunutým okapem



Blachotrapez Sp. z o.o.
ul. Kilińskiego 49a,
34-700 Rabka-Zdrój
ZAKŁAD PRODUKCYJNY
Polanka 323,
32-400 Myślenice, Polska
www.kropssystem.pl

0520

Instalace vyžaduje odborné znalosti a zkušenosti. Tyto pokyny jsou ilustrativní a nezbavují smluvní strany jejich povinností dodržovat pravidla a normy zastřešování. Způsoby montáže v této příručce jsou všeobecné pokyny. vyžadován způsob montáže se může lišit od způsobu uvedeného v příručce v závislosti na typu střechy nebo regionálních řešení. Chcete-li použít obecné pokyny a montážní pokyny, podle pokynů projektanta nebo kontaktujte naše oddělení technické podpory. Zkušeni dodavatelé mohou mít individuální řešení, které společnost BLACHOTRAPEZ akceptuje.